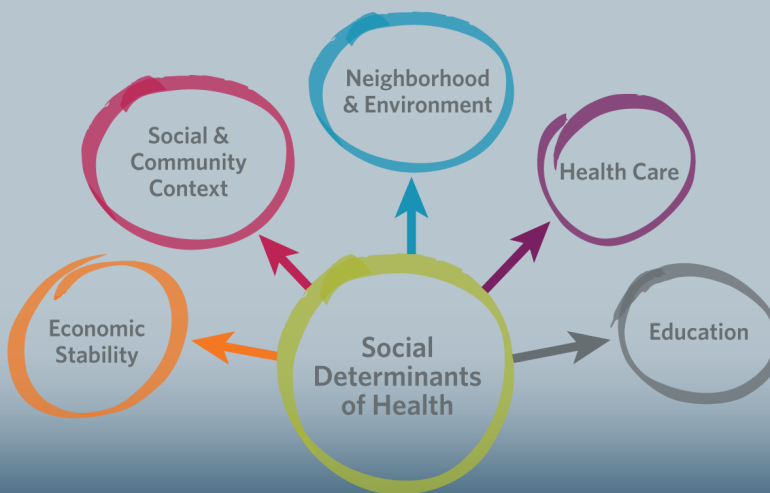


**SOCIAL DETERMINANTS OF  
HEALTH - (SDOH)**

**SOCIAL DETERMINANTS OF HEALTH ARE DEFINED BY THE CENTERS FOR MEDICARE & MEDICAID SERVICES (CMS) AS "... THE CONDITIONS IN THE ENVIRONMENTS WHERE PEOPLE ARE BORN, LIVE, LEARN, WORK, PLAY, WORSHIP, AND AGE THAT AFFECT A WIDE RANGE OF HEALTH, FUNCTIONING, AND QUALITY-OF-LIFE OUTCOMES AND RISKS." THE CMS FRAMEWORK FOR HEALTH EQUITY INCLUDES FIVE PRIORITIES, AND SDOH ARE A COMPONENT OF THE FIRST PRIORITY: TO EXPAND THE COLLECTION, REPORTING, AND ANALYSIS OF STANDARDIZED DATA.**

**CMS IS LOOKING INTO ADDING THESE SDOH DIAGNOSES TO FUTURE HCC MODELS FEELING THAT TRACKING OF THESE DXS SHOULD BE A PRIORITY AND WILL HELP TO IMPROVE QUALITY OF CARE & HEALTH OUTCOMES**

# Guidelines



Domains	Social Risk Factors	ICD-10-CM
What is your current housing situation?	Sheltered homelessness	Z59.01
	Unsheltered homelessness	Z59.02
	Risk of homelessness (imminent)	Z59.811
	Housed, homeless in past 12 mos.	Z59.812
	Other housing problems (e.g., financial)	Z59.89
What is your education level?	Less than high school diploma	Z55.5
What is your employment situation?	Change of job	Z56.1
	Threat of job loss	Z56.2
	Stressful work schedule	Z56.3
	Discord with boss and co-workers	Z56.4
	Uncongenial work environment	Z56.5
	Physical and mental strain	Z56.6
	Sexual harassment on the job	Z56.81
What is your household income level?*	Extreme poverty	Z59.5
	Low income	Z59.6
Are you able to afford food?	Food insecurity	Z59.41
How would you describe your social environment?	Social exclusion and rejection	Z60.4
	Perceived discrimination, persecution	Z60.5
Are you having problems managing day-to-day activities?	Burnout	Z73.0
	Limitation of activities due to disability	Z73.6
Are you a victim of domestic violence?	Relationship problems with spouse or partner	Z63.0

\*This question would require a formulaic equation to be built into the questionnaire.

**SDOH CODES ARE REPORTED IF: DOCUMENTED BY MEDICAL ASSISTANTS, SOCIAL WORKERS, CASE MANAGERS, NURSES & PROVIDERS OR SELF REPORTED BY PATIENT AND INCORPORATED INTO THE MEDICAL RECORD**

THERE ARE MANY FACTORS THAT CAN INFLUENCE A PATIENT'S HEALTH STATUS AND THEIR CONTACT WITH HEALTH SERVICES. SUCH SOCIAL DETERMINANTS OF HEALTH (SDOH) ARE REPORTABLE WITH ICD-10-CM "Z" CODES WHEN EITHER DOCUMENTED IN THE MEDICAL RECORD, COLLECTED BY OTHER CLINICAL OR NON-CLINICAL STAFF, OR SELF-REPORTED. INCORPORATING A QUESTIONNAIRE THAT PATIENTS CAN COMPLETE IN THE WAITING ROOM OR ONLINE PRIOR TO THEIR VISIT ALLOWS PROVIDERS TO LEARN OF AND ADDRESS ANY EXTERNAL FACTORS THAT MAY IMPEDE THEIR PATIENTS' HEALTH OUTCOMES.

STEPHANIE ZEIBER, MPA, PA-C  
APP PROGRAM MANAGER FOR VALUE BASED CARE  
E-MAIL: SNZEIBE2@SENTARA.COM  
OFFICE PHONE: 757-252-3228

BETH ST. LAURENT, LPN, CPC, CRC, CPMA  
TEAM LEAD RISK ADJUSTMENT CODERS  
E-MAIL: EGSTLAUR@SENTARA.COM  
PHONE: 757-252-2905

BETH ALLEN, CPC, CRC  
HCC CODER/ CODING EDUCATOR  
E-MAIL: ERALLEN3@SENTARA.COM  
CELL: 757-469-1393

DIANA DLUBALA, CPC, CRC  
HCC CODER SSE, SSC, NENC  
E-MAIL: DVDLUBAL@SENTARA.COM  
PHONE: 757-252-2759

JANELLE COLEMAN, CPC, CFPC, CRC  
HCC CODER SSW, PENINSULA, NOVA  
E-MAIL: JEGRANDI@SENTARA.COM  
PHONE: 757-252-2815

PATRICIA TAYLOR, CPC  
HCC CODER BLUE RIDGE, SCQN  
E-MAIL: PATAYLO2@SENTARA.COM  
PHONE: 434-654-7734